

Rule 21 **Group J - M-901E, 3-1/4 Inch Travel**

Removed Group J Qualifier	Name	Type	AAR Spec	Installed Length	Pocket Length	Remarks:
01	Cardwell Westinghouse Mark R500	Steel and Rubber	M901E	22 3/8"	24 5/8"	Substitution of Groups J, K, P, Q, & R for Group J can be done only with the car owner's permission.
10	Cardwell Westinghouse Type Mark 50	Steel	M901E	22 3/8"	24 5/8"	
14	Miner TF-880	Steel and Rubber	M901E	22 3/8"	24 5/8"	
18	Miner Crown SE	Steel	M901E	22 3/8"	24 5/8"	
21	Stucki PowRGuard™ XE	Steel	M901E	22 3/8"	24 5/8"	

Rule 21 **Group M - M-901E, 2-3/4 Inch Travel**

Removed Group M Qualifier	Name	AAR Spec	Installed Length	Pocket Length	Remarks:
05	Cardwell Westinghouse Mark L	M901E	22 3/8"	24 5/8"	Substitution of Groups J, K, N, P, Q & R for Group M can be done only with the car owner's permission, except when car was built after January 1, 1995 or is equipped with Type F coupler.

Rule 21 **Group K - M-901G, 3-1/4 Inch Travel**

Removed Group K Qualifier	Name	AAR Spec	Installed Length	Pocket Length	Remarks:
02	Cardwell Westinghouse Mark H-60	M901G	22 3/8"	24 5/8"	Substitution of Groups J, Q, & R for Group K can be done only with the car owner's permission. When substituting Group J for Group K, verify compliance with car weight limitations of Section 3 Rule 68 of AAR Office Manual.
07	Cardwell Westinghouse Mark 558	M901G	22 3/8"	24 5/8"	
08	Stucki PowRGuard™ GX	M901G	22 3/8"	24 5/8"	
09	Cardwell Westinghouse Mark 75G	M901G	22 3/8"	24 5/8"	

Qualified Models for Recondition, Test, or Pass



Stucki PowRGuard™ XE
PowRGuard™ GXE
PowRGuard™ GX



Keystone K 25
K 250
K 2500



Miner Crown SE



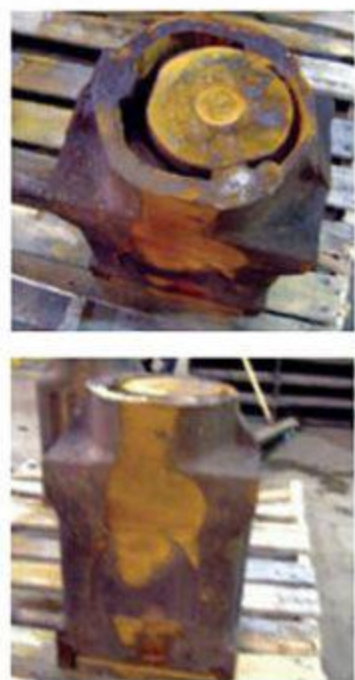
Cardwell Westinghouse Mark 50
R500



Miner TF-880

Examples of Non-Qualified Draft Gear & Unacceptable Models

Scrap Draft Gear Criteria
Draft Gear is Stuck in Compressed Position **Caution!!!**



Scrap Draft Gear Criteria
Split or Cracked Case



Scrap Criteria
Excessive Case Wear > 1/8 Inch



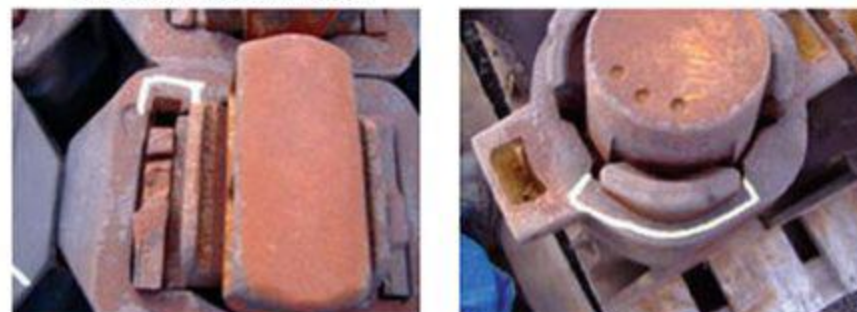
Scrap Criteria
Center Wedge is Damaged



Friction Component Classification Scrap Condition
Images Below Illustrate Broken Friction Plates



Scrap Criteria Draft Gear Case Damage Examples
Excessive Case Wear & Broken Friction Plates



Unacceptable for Reconditioning
Call Independent Draft Gear for a Complete Listing of Unacceptable Makes & Models



Marking Identification
RTP IDG 12-04 Reconditioned, Tested, & Passed



AMERICAN INDUSTRIES COUPLERS, YOKES, & FOLLOWER BLOCKS

American Way - Sharon, PA 16146

P: 724.981.4100

email: gneedler@american-ind.com

